

Journey into Learning

Welcome to Kindergarten at
Georges Vanier Catholic School



LET US PRAY



Loving God ,
We thank you for the gift of our children, and
we ask that we may always treasure how
special and important they are. As we raise
these children, we are forming them, and they
are forming us. We thank you Lord for using our
children to teach us about life and love. May
each child you have created recognize how
precious they are in your eyes.



Amen



LAND ACKNOWLEDGEMENT

We acknowledge that our schools are built on the homelands of the Michizaagiig Anishinaabek also known as the Mississaugas of the Credit. We thank them for their care of the land, water, plants, and animals. We join them in the care of nature and of each other.



Welcome to Georges Vanier Catholic School



OUR VISION FOR EARLY LEARNING

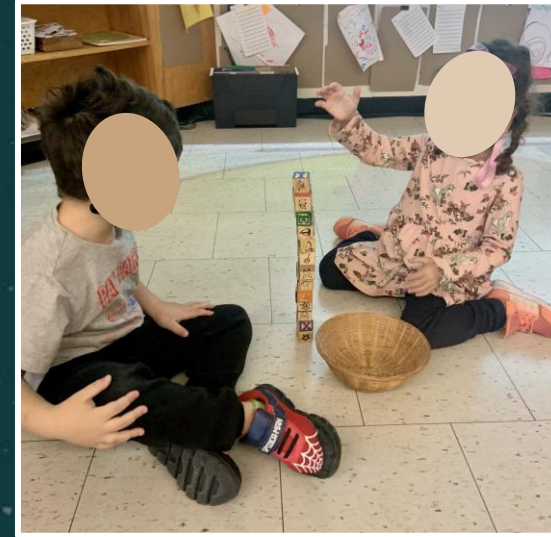
In partnership with the family and church, is to provide, in a responsible manner, a Catholic education that develops spiritual, intellectual, aesthetic, emotional, social, and physical capabilities of each individual to live fully today and to meet the challenges of the future, thus enriching the community.





THE KINDERGARTEN PROGRAM

"All children are competent, capable of complex thinking, curious, and rich in potential and experience. They grow up in families with diverse social, cultural, and linguistic perspectives. Every child should feel that he or she belongs, is a valuable contributor to his or her surroundings, and deserves the opportunity to succeed (The Kindergarten Program, pg 10)."

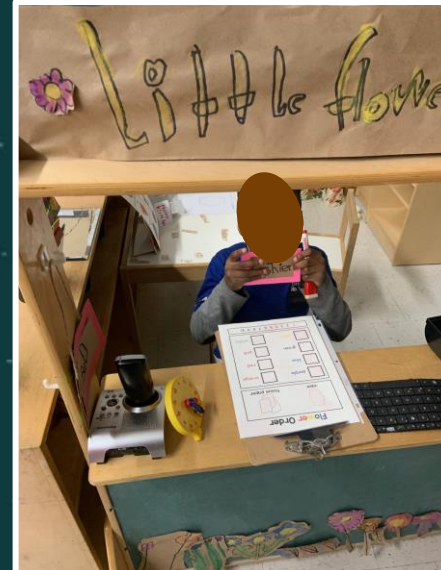




THE CURRICULUM

We promote the development of the whole child through attention to play and inquiry based learning experiences across the four Frames of the Program.

BELONGING & CONTRIBUTING



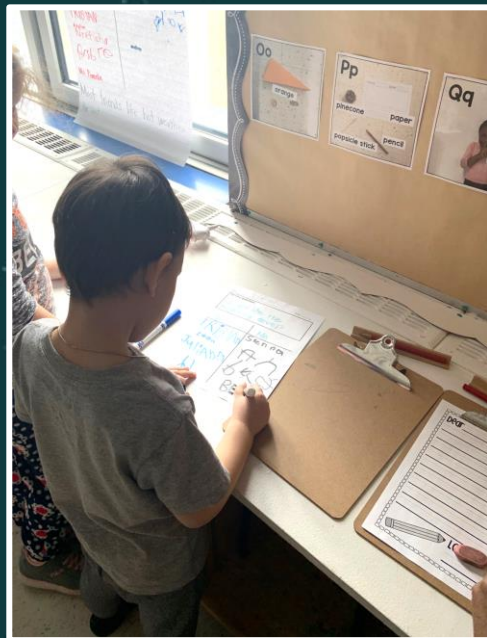


SELF REGULATION & WELL BEING





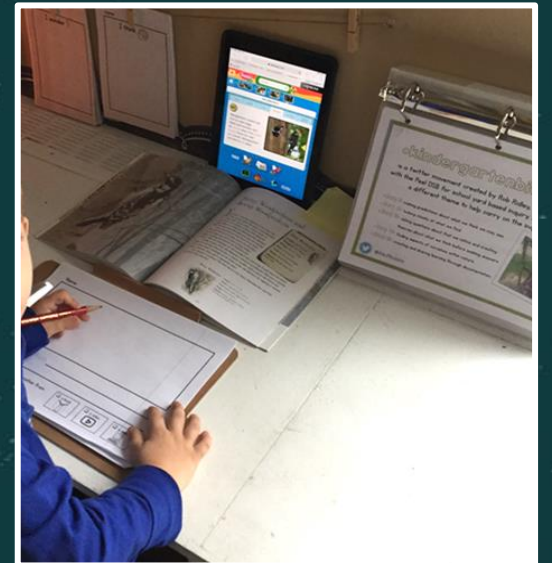
DEMONSTRATING LITERACY & MATHEMATICS BEHAVIOURS



$$\begin{array}{r} + 2 \\ 4 \\ \hline 6 \end{array}$$



PROBLEM SOLVING & INNOVATING





FLOW OF THE DAY

- ✓ Two play blocks (am and pm)
- ✓ Short whole group learning/sharing time
- ✓ Small guided group learning
- ✓ Two outdoor blocks
- ✓ Quiet time
- ✓ Library time
- ✓ Daily physical activity breaks
- ✓ Gym time





OUTDOOR PLAY





BELL TIMES

Arrival 9:00 am

Lunch 12:01 pm*

Dismissal 3:30 pm

LUNCH & SNACK TIME ☆



- 100% Nut-free please. Any other allergies will be communicated at the beginning of the year.
- Manageable meals; snack is 10-15 mins (am and pm) and lunch is 20 mins. ☆
- Label containers 1, 2, 3 to foster independence during eating times.
- Spill proof water bottle



★ WHAT DO CHILDREN NEED? ★



CHILD SIZE
BACKPACK



SPILL PROOF
WATER BOTTLE



VELCRO SHOES



★ LUNCH BAG



EXTRA CHANGE
OF CLOTHES



HOW MIGHT WE PREPARE FOR SEPTEMBER?



Practice
proper
hand washing



Practice
dressing
independently



Practice opening
and closing food
containers



Pack an extra set
of clothes in a
ziploc bag

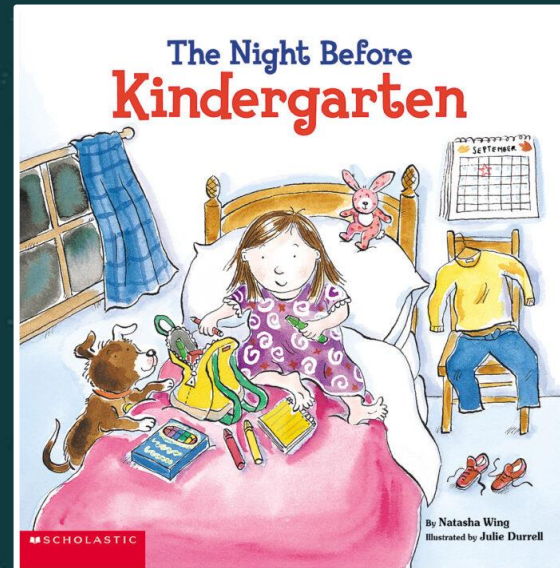
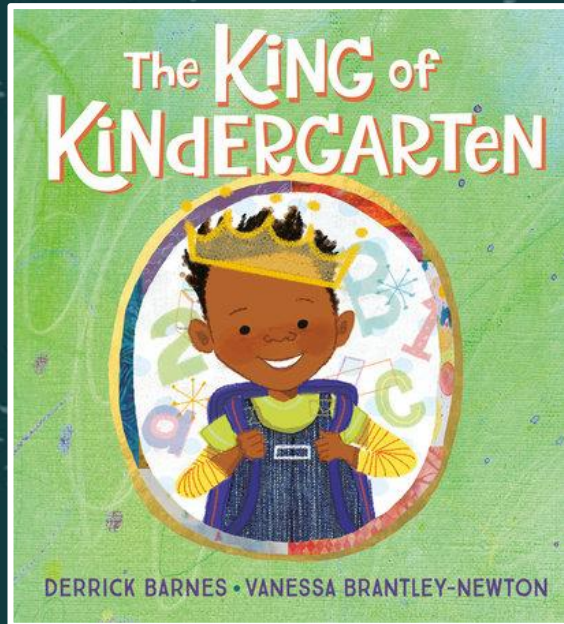
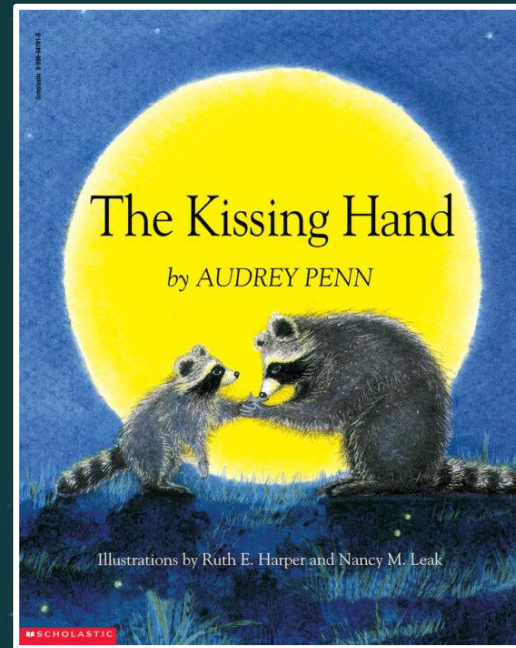
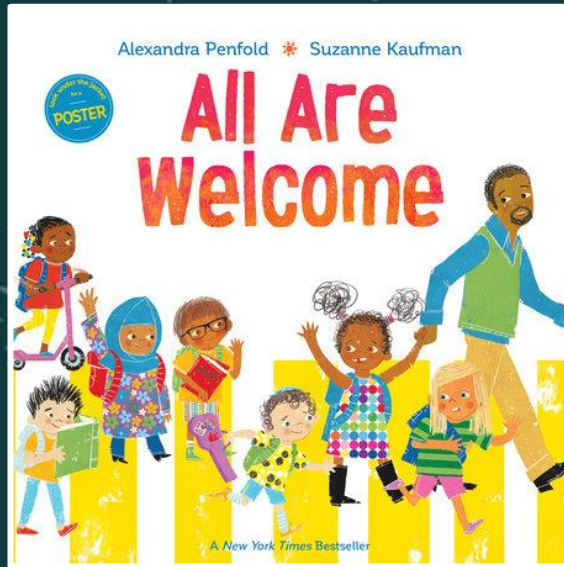


Practice sharing &
turn taking



Work on
recognizing and
printing their
name



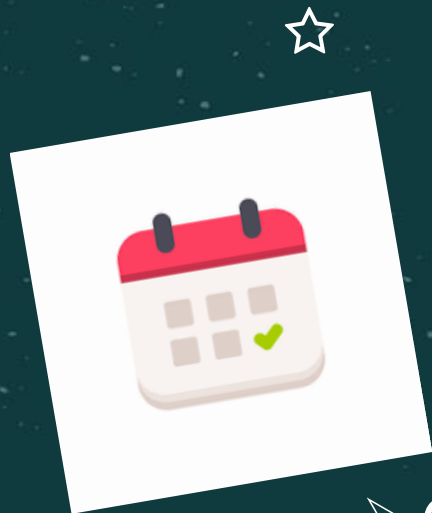


★
READ!



JOURNEY INTO LEARNING BAGS!





WHEN DO WE START SCHOOL?

- Our Year 1 (JK) students will begin their school year with a staggered entry
- Students will start on **either** **Wednesday, September 3rd or Thursday, September 4th for a transition day**
- All Year 1 students will start full-time, every day as of **Friday, September 5th, 2025**
- You will receive communication from the school confirming your classroom placement and transition day by the end of August 2025.

DPCDSB SUPPORT SERVICES

1

BEFORE &
AFTER
SCHOOL
CARE

2

STUDENTS
WITH
DIFFERING
ABILITIES

3

SETTLEMENT
SERVICES

☆

QUESTIONS?

☆



THANKS FOR JOINING US!



dpcdsb.schools



DPCDSBSchools



DPCDSBVideos

CREDITS: This presentation template was created by **Slidesgo**, including icons by **Flaticon**, and infographics & images by **Freepik**

+ x ÷